



OST/SOUTH UNION PARKS PROJECT

STAKEHOLDER MEETING MAY 14, 2020

OST/SOUTH UNION PARKS

AGENDA:

- Welcome
- Review Agenda and Meeting Goals
- Project Introduction
- Stakeholder Introductions
- Project Overview -
 - TSU Urban Planning Introduction
 - BREAK
 - Outreach and Constituency Building
- Stakeholder Projects happening in the area
- Breakout Session - feedback
- Wrap-up / Next Steps

GOALS:

- Inform attendees about the project - purpose, schedule, progress
- Ask for feedback on information gathering and outreach
- Inspire stakeholder involvement in outreach and next steps

A COMMUNITY-CENTERED PLAN TO ENHANCE AREA PARKS AND CREATE A NEIGHBORHOOD PARK NETWORK

OST/SOUTH UNION PARKS PLAN

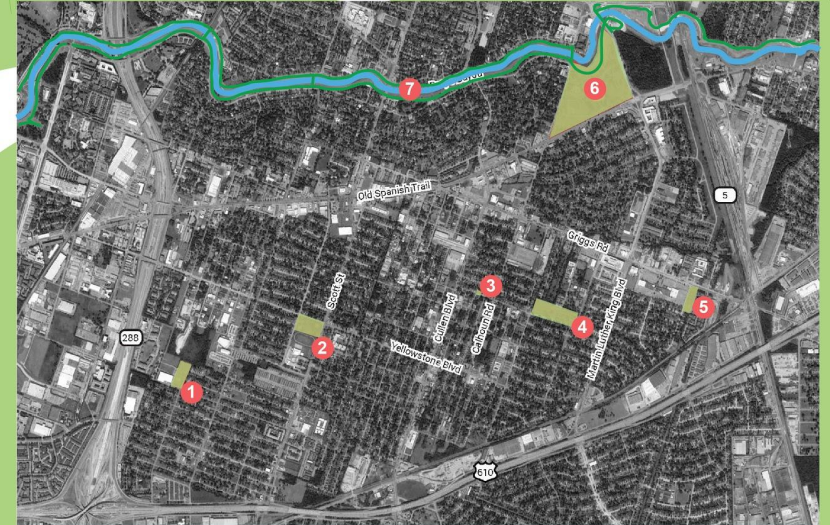
A collaboration between:
Houston Parks Board
OST/South Union GO ARTS Team
Urban Planning and Environmental Policy Department

UN PLAN CENTRADO EN LA COMUNIDAD PARA MEJORAR LOS PARQUES DEL ÁREA Y CREAR UNA RED DE PARQUES DE VECINDARIOS

OST/SOUTH UNION PLAN DE PARQUES

Una colaboración entre:
Houston Parks Board
OST/South Union GO ARTS Team
Urban Planning and Environmental Policy Department
on Texas Southern University
Houston Parks and Recreation Department
Apoyado por:
Líderes cívicos OST/South Union

Hecho posible a través de una generosa donación de Local Initiatives Support Corporation (LISC)



	CALENDARIO 2020
1 ZOLLIE SCALES PARK	Condiciones Existentes del Área Enero - Marzo
2 GEORGE T NELSON PARK	Condiciones Existentes de los Parques Marzo - Mayo
3 RESTORATION COMMUNITY PARK	Participación de la Comunidad Marzo - Julio
4 HARTSFIELD ELEMENTARY SPARK PARK	
5 PARQUE EN PALM CENTER	
6 MACGREGOR PARK	
7 BRAYS BAYOU GREENWAY	
8 SUGERENCIAS COMUNITARIAS	

Para más información contacte:
Paulette Wagner - GO ARTS Team - paulettewagner@comcast.net
Lisa Graiff - Houston Parks Board - lisa@houstonparksboard.org



PROJECT PARTNERS

Project Partners:

- Local Initiative Support Corporation (LISC) Houston
- Neighborhood Recovery CDC
- OST/South Union GO Arts Team
- Houston Parks Board
- Urban Planning and Environmental Policy Department at Texas Southern University
- Houston Parks and Recreation Department



A COMMUNITY-CENTERED PLAN TO ENHANCE AREA PARKS AND CREATE A NEIGHBORHOOD PARK NETWORK

OST/SOUTH UNION PARKS PLAN

A collaboration between:
Houston Parks Board
OST/South Union GO ARTS Team
Urban Planning and Environmental Policy Department

UN PLAN CENTRADO EN LA COMUNIDAD PARA MEJORAR LOS PARQUES DEL ÁREA Y CREAR UNA RED DE PARQUES DE VECINDARIOS

OST/SOUTH UNION PLAN DE PARQUES

Una colaboración entre:
Houston Parks Board
OST/South Union GO ARTS Team
Urban Planning and Environmental Policy Department
on Texas Southern University
Houston Parks and Recreation Department

Apoiado por:
Líderes cívicos OST/South Union

Hecho posible a través de una generosa donación de Local Initiatives Support Corporation (LISC)

CALENDARIO 2020

Condición	Fecha
Condiciones Existentes del Área	Enero - Marzo
Condiciones Existentes de los Parques	Marzo - Mayo
Participación de la Comunidad	Marzo - Julio

Para más información contacte:
Paulette Wagner - GO ARTS Team - paulettewagner@comcast.net
Lisa Graiff - Houston Parks Board - lisa@houstonparksboard.org

INTENT AND BACKGROUND

ORIGINAL INTENT:

Comprehensive community-driven OST/South Union park master plan that includes parks, bike-hike trails, esplanades, sidewalks, signage, and street restorations.

It will include celebratory community events that employ artists, performing artists, spoken word writers, musicians, public historians, among others for public and after-school programming.

ORIGINATORS:

Southeast Houston Transformation Alliance (SEHTA)
GO Neighborhoods



PROJECT HISTORY

CARROLL BLUE



Carroll Parrott Blue, a scholar, producer, author and filmmaker with a special interest in the history and revitalization of Southeast Houston neighborhoods, passed away on Dec. 11, 2019.

- 2011 - Carroll Parrott Blue is awarded a National Endowment of the Arts grant to study "creative placemaking" in the OST/South Union community.
- 2012 - through the efforts of Ms. Blue, the Southeast Houston Transformation Alliance (SEHTA) was established.
- 2013 - OST/South Union became a LISC GO Neighborhood, with a goal of transforming the area into a healthy, vibrant, safe and economically stable community.
- 2014 - "Quality of Life Agreement" (QLA) was created, a five-year plan to initiate and sustain improvements throughout OST/South Union.
- As part of the QLA, residents volunteered to serve on various committees or "GO Teams".
- 2019 - "Art, Culture, History and Media GO Team" worked with LISC GO Neighborhood, Houston Parks Board, Houston Parks and Recreation Department and Texas Southern University to secure funds to finance a comprehensive assessment of parks in OST/South Union.

PROJECT FUTURE

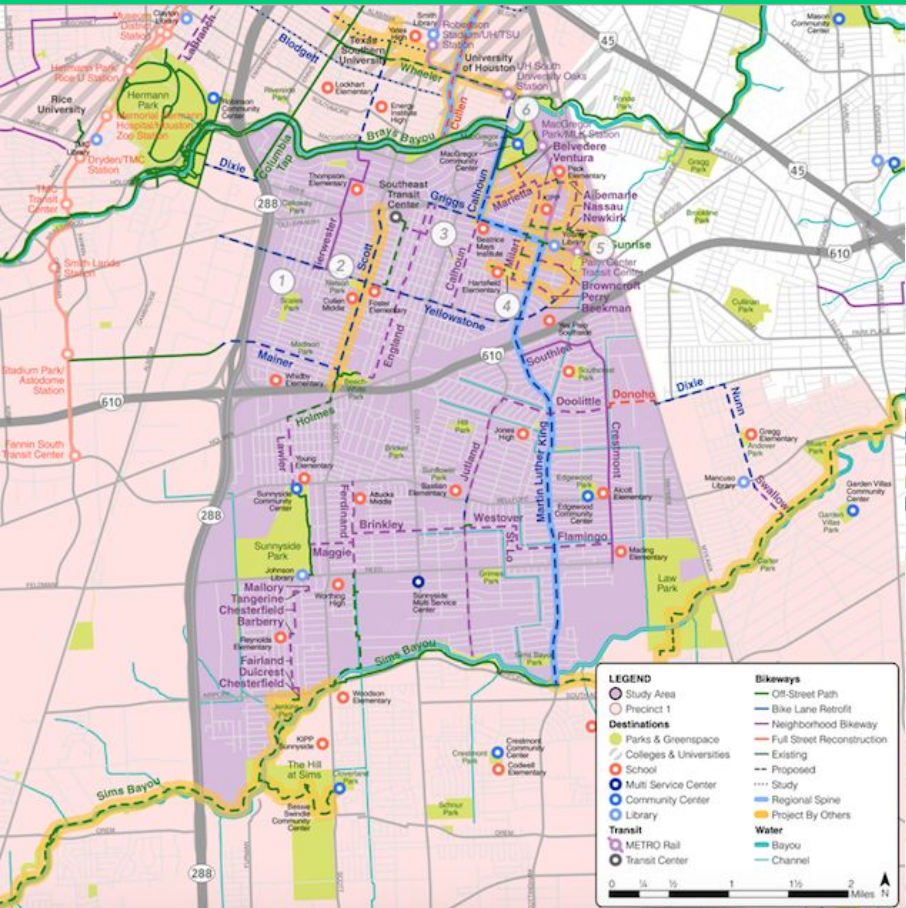
CARROLL BLUE



CONSTITUENCY BUILDING!

- One person can make a difference
- But you can't do it alone.... recruit others!
- If the goal is good for everyone, others are more likely to support it
- It helps to be friendly, have a great attitude, and to expect the best
- Telling the story of the place and the people is key

PREVIOUS PLANNING WORK



SIX OST - SOUTH UNION AREA PARKS

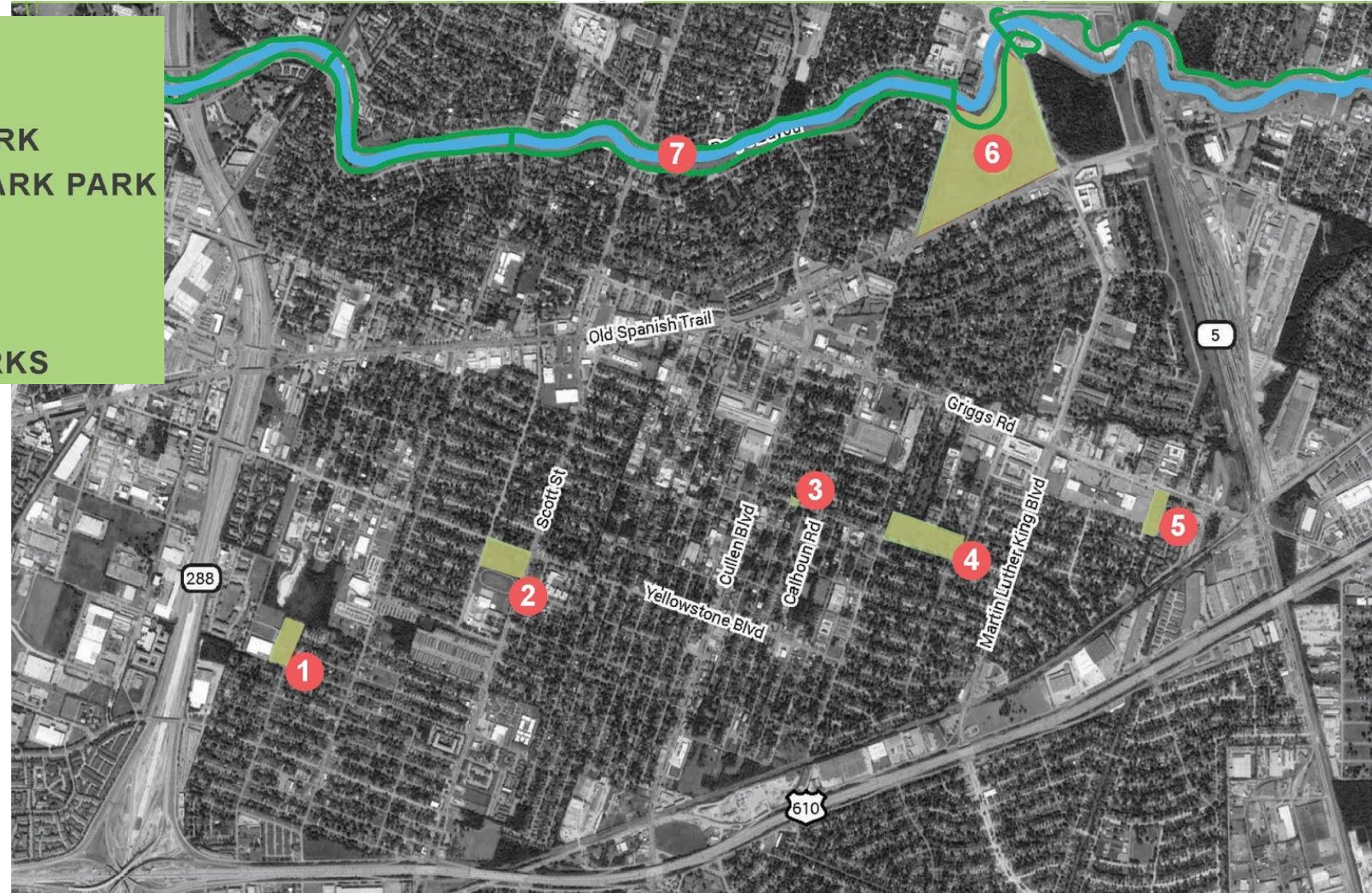


2015 NEIGHBORHOOD GREENWAYS PLAN

dSakura
robinson

OST/SOUTH UNION SIX PARKS PLAN

- 1 ZOLLIE SCALES PARK
- 2 GEORGE T NELSON PARK
- 3 RESTORATION COMMUNITY PARK
- 4 HARTSFIELD ELEMENTARY SPARK PARK
- 5 PARK AT PALM CENTER
- 6 MACGREGOR PARK
- 7 BRAYS BAYOU GREENWAY
- 8 OTHER COMMUNITY INPUT PARKS



INTRODUCTIONS

PARTNERS:

- LISC -
 - Senchel Matthews
- NRCDC -
 - Gwen Fedrick
- OST/South Union GO Arts Team -
 - Paulette Wagner
- Houston Parks Board -
 - Lisa Kasianowitz
 - Lisa Graiff
- TSU -
 - Professor Sheri Smith
 - Chanelle Nicole Frazier
 - Elahe Roohbakhsh
 - Charles Young
- HPARD
 - Rubi Longoria
 - Daniel Khuat

COORDINATING PARTNERS:

- Greater Southeast Houston Management District
- Restoration Community Church
- SPARK Parks
- City of Houston Departments
 - Planning,
 - Complete Communities,
 - Public Works
- Not for Profits
 - Bike Houston
 - Houston Bike Share
 - The Nature Conservancy
- METRO
- Southeast Houston Transformation Alliance
- Harris County

COMMUNITY GROUPS:

- OST/South Union Super Neighborhood
- Agape Development
- Foster Place
- Grand Park
- La Salette Place
- MacGregor Palm Terrace
- MacGregor Trails
- Scott Terrace
- Southern Village
- South Union



PROJECT PHASES

LISC GRANT COMPONENTS:

To carry out Phase 1 of an Integrated Planning and Programming Study

INTEGRATED PLANNING AND PROGRAMMING STUDY:

Phase 1 – Information Gathering / Outreach - LISC Grant

- Why Neighborhood Parks are Important
- Existing Conditions Assessment
 - Neighborhood
 - Parks
- Identify Opportunities and Constraints
- Outreach / Park Stewardship Building

Phase 2 – Analysis / Outreach - Funding TBD

- Information analysis
- Preliminary Recommendations
- Community Park Stewardship in action

Phase 3 – Plan Development / Outreach - Funding TBD

- Updated Recommendations
- Cost Estimates
- Implementation Plan

**PHASE 1 funded by
LISC Houston**



**Innovative Project and
Transformation Grant**

OST/SOUTH UNION PARKS PROJECT - PHASE 1
EXISTING CONDITIONS ASSESSMENT

TEXAS SOUTHERN UNIVERSITY

PHASE 1 – RESEARCH & ASSESSMENT

Texas Southern University's Urban Planning & Environmental Policy Program: the only accredited planning master's in the Houston-area. In addition to being housed at an HBCU, the program is known nationally for it's focus on equity and environmental justice.

UPEP 805 Planning Studio: the studio or capstone project is a unique opportunity for graduating students to apply their planning knowledge through working with community partners on relevant projects in the Houston-area.



The Team:

-  **Chanelle Nicole Frazier**
-  **Elahe Roohbakhsh**
-  **Charles Young**



Elaheh Roohbakhsh

I am a master student of UPEP at TSU. My goal is to better understand the living environment through the integration of urban planning and architecture, which has been my undergraduate degree. Studying at TSU and working with professors and students has been a great learning experience for me.



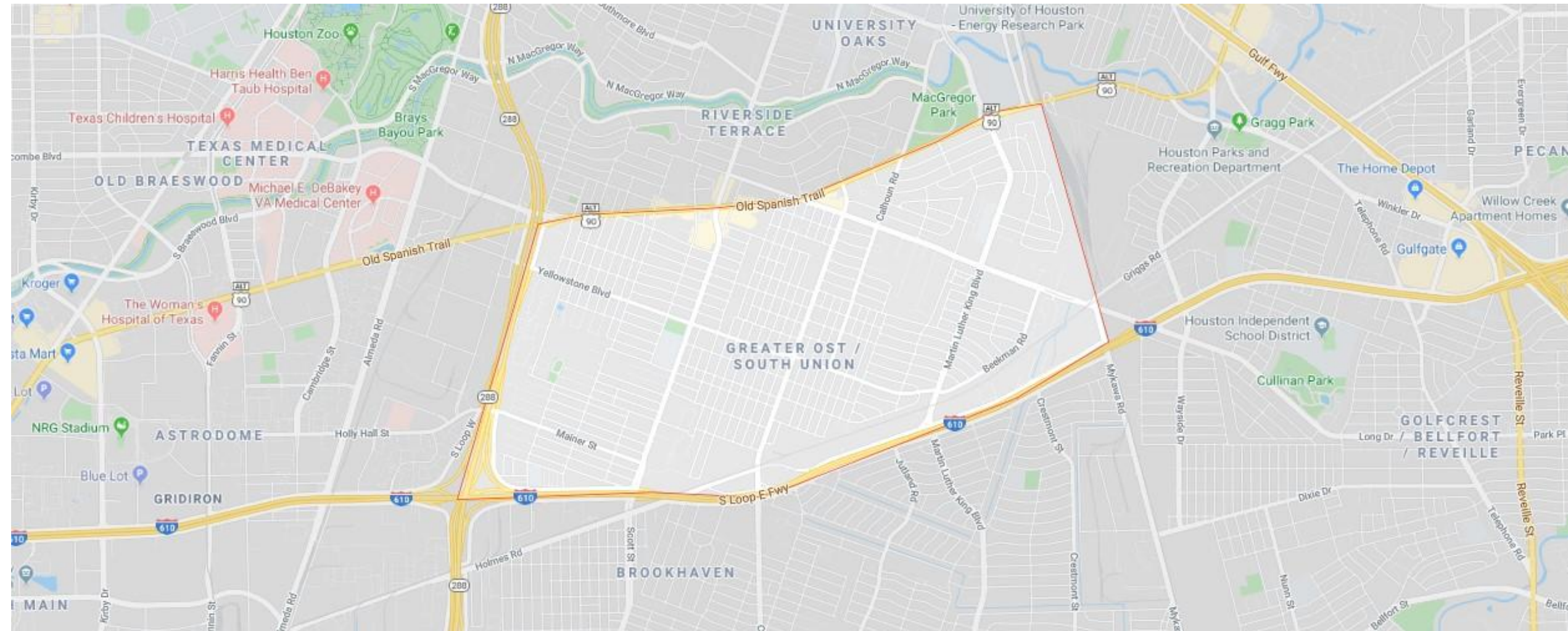
WHY PARKS MATTER

A literature review of parks, park systems, and access to open space all indicate that there are endless benefits associated with a neighborhood park that is maintained and used for its intended purpose. In light of our most pressing issues that impact communities both on a local and global scale, such as Covid-19 and global warming, the need for park systems and green space has become more prevalent than ever.

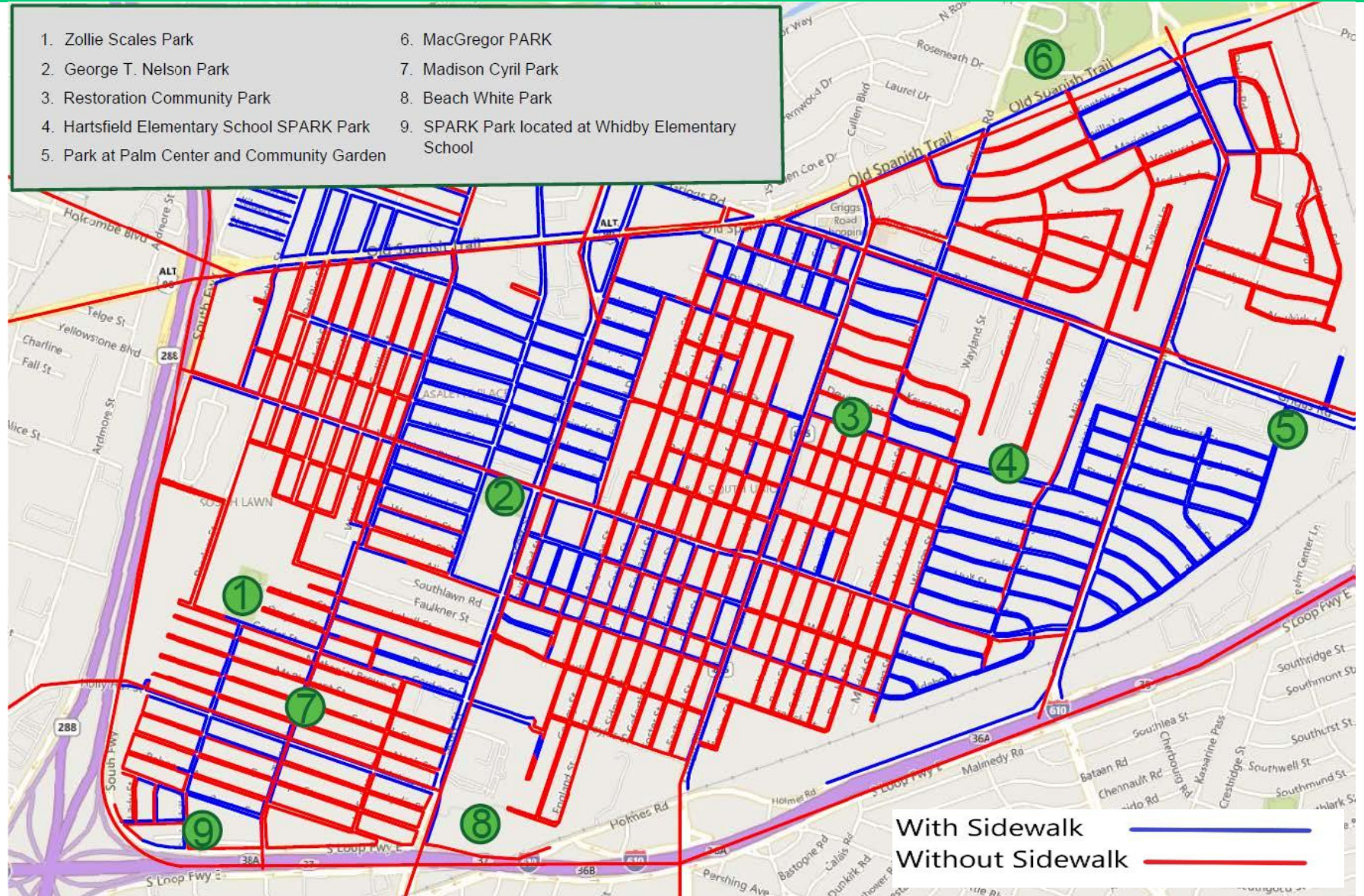
In short, we believe parks are vital in helping in the following areas:

- **Parks for Human Health:** Parks as essential spaces to breathe, exercise, and enjoy the outdoors.
- **Parks for Community:** Parks and parks programming as recreational space that serve as an essential public good, as they can be used as a space for community organizing..
- **Parks for Positive Change:** Parks are a dynamic space that can be used as an anchor for equity and positive change.

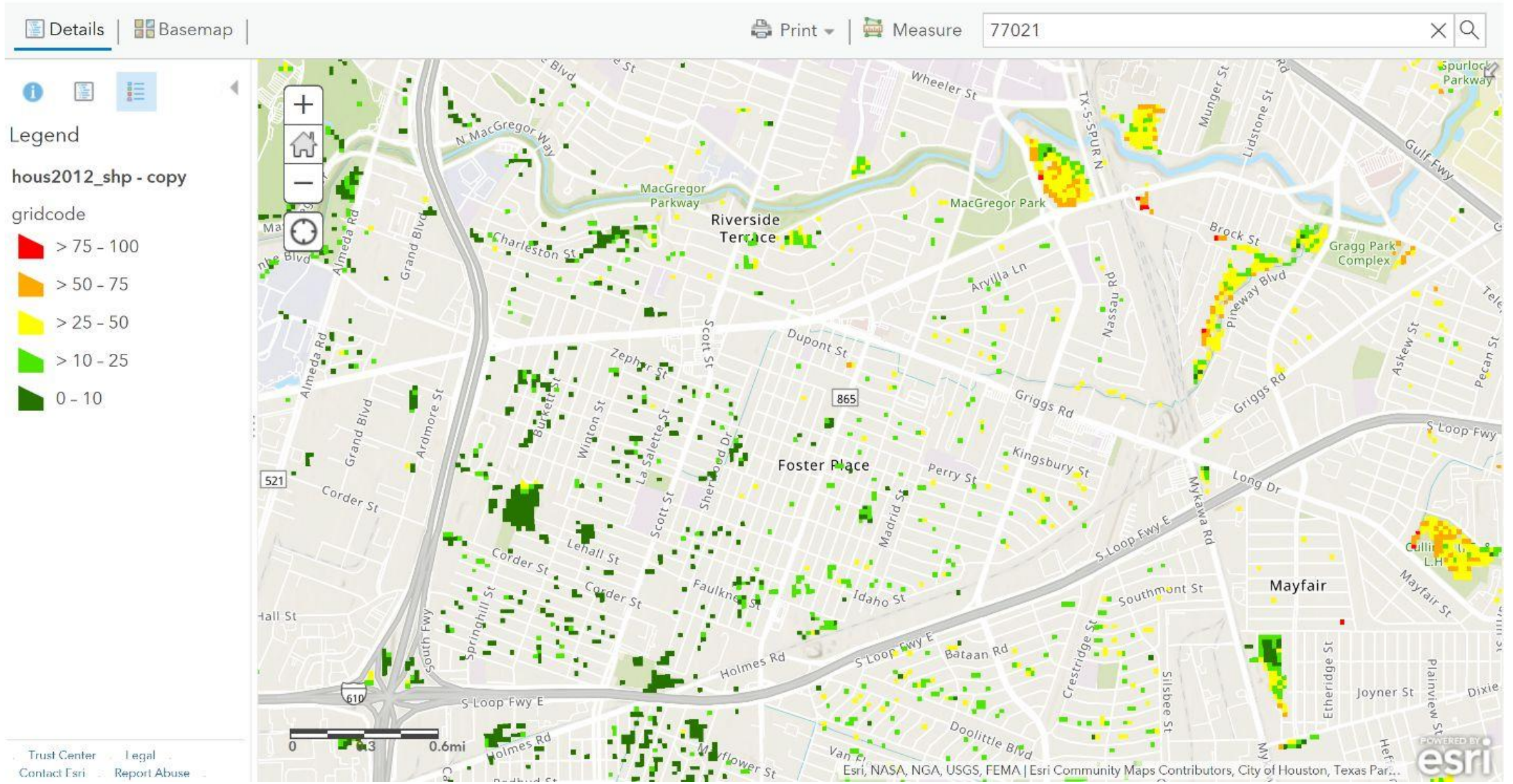
NEIGHBORHOOD LOCATION



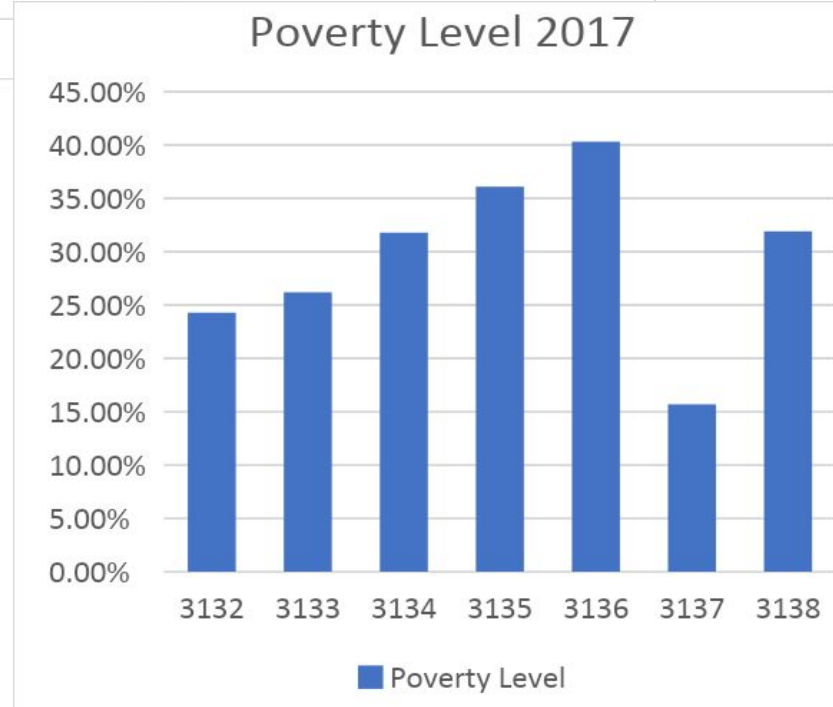
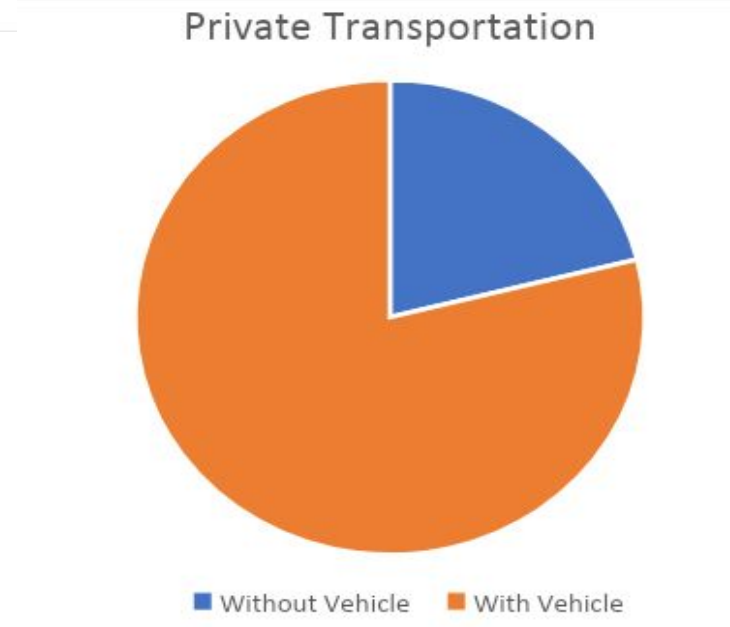
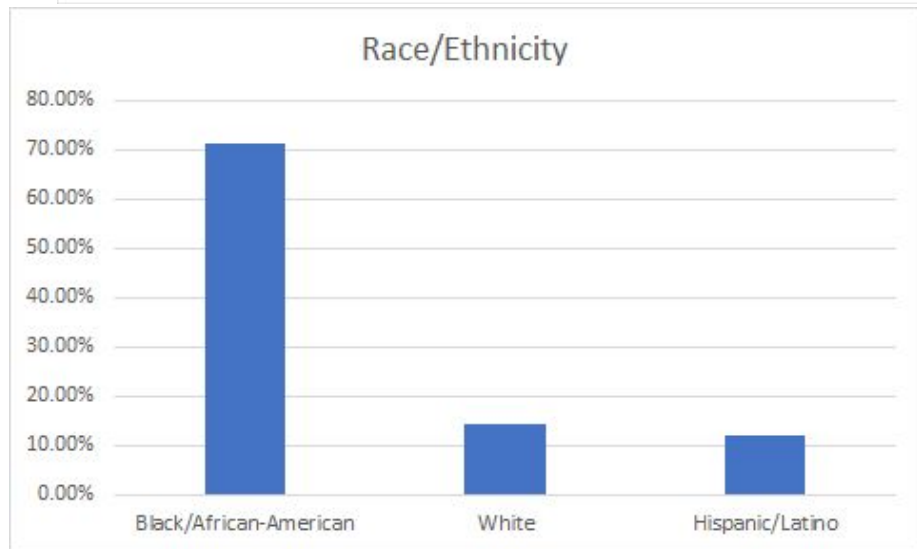
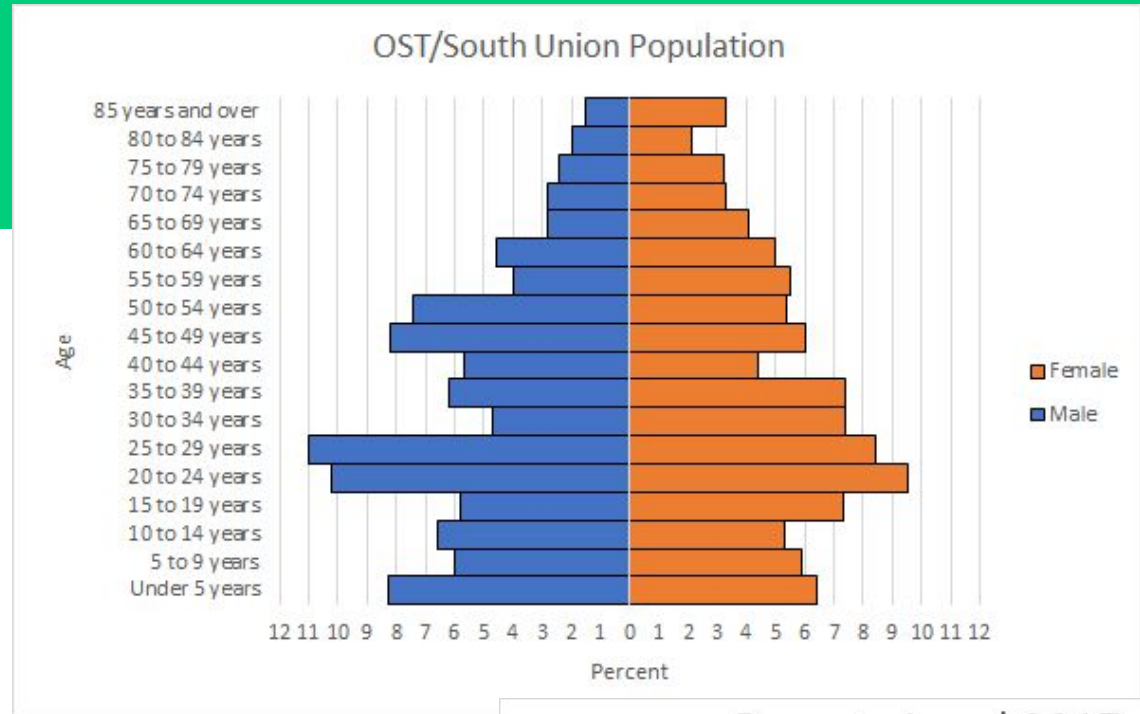
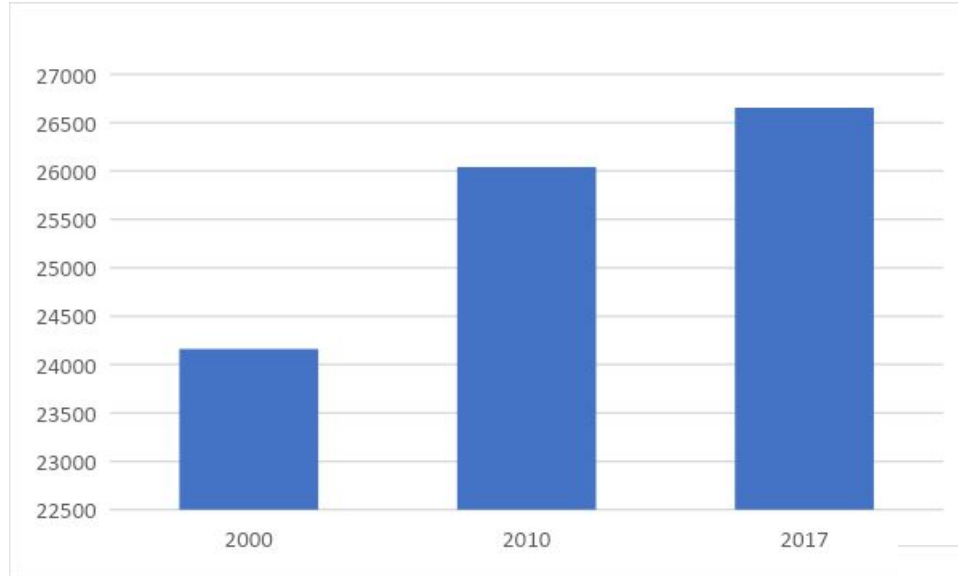
CONNECTIVITY - SIDEWALKS



ECOLOGY - TREE CANOPY



DEMOGRAPHICS



PARKS ASSESSMENT PROCESS

PROCESS	PARK	YEAR	OWNERSHIP	History	SITE VISITS	PICS	ASSESSED
✓ Initial meeting with Houston Parks department - learn of other initiatives	Beech-White	1987/ 2019	City of Houston	x	X	x	X
	Park at Palm Center	2004	City of Houston	x	X	x	X
✓ Houston Parks Department completes park assessment tool	Cyril Madison	1987	City of Houston	x	X	x	X
✓ TSU and Parks Department meet at Yellowstone for run through with tool*	Yellowstone/George T. Nelson	1952	City of Houston	x	X	x	X
	Zollie Scales	1960	City of Houston	X	x	x	X
✓ TSU complete site visit with pictures. Submit draft to Parks Department	McGregor Park						
✓ Parks Department confirms assessment	Hartsfield Elementary SPARK Park						
	Whidby Elementary SPARK Park						

PARKS ASSESSMENT PROCESS



Park Condition Assessment Scoring Criteria

Note: No pools or buildings were scored in the exercise. All pools and buildings have had a separate condition assessment performed in 2012 and 2014.

4 Primary Categories (each was comprised a variety of components and averaged)

- Safety – 35% (barriers and sight lines, Concrete and asphalt condition and security call outs)
- Amenities – 30% (general amenities, sports fields pavilions and water features)
- Park Condition – 20% (utilities, site condition, and greenspace)
- Accessibility – 15% (neighborhood accessibility, trail connectivity and playground accessibility)

Scoring Numerical Values:

- Good - 1-3
- Fair - 4-6
- Poor - 7-9
- Replace - 10

Definitions:

Good: New to near new condition (90% plus lifespan left)

Fair: Showing wear (rust chips needing paint, parts missing) or in need of minor renovations. (60% lifespan left)

Poor: Showing heavy wear/rot/extensive rust and in need of major renovation, but still salvageable. (30% of lifespan left) But can be lengthened if renovation takes place

Replace: cost to renovate exceeds amenity value (0% life span)

Scoring was assigned and collected by Parks employees who visit these parks everyday and have the expertise to assign values based on existing conditions. A meeting was held with all inspectors to outline grading procedures and ensure standards were set to minimize differing grade margins. Grading examples were provided to further validate the prescribed grading range.

Park Inspection & Evaluation Tool

Park Name: Park at Palm Center Park Evaluator: Sheri Smith Date: 3/27/20

Scoring Instructions: All items should be scored on a 1 to 10 scale. 1-3 means the condition of the park feature/amenity is good, 4-6 means the condition of the park feature/amenity is fair, 7-9 means the condition of the park feature/amenity is poor, and 10 means the park feature/amenity requires immediate replacement.

Park Access:

- 4 Sufficient number of park entrances that are highly visible and are easy to locate.
- 3 Park entrance is well designed with clear signage.
- 5 Safe and convenient access to the park (crosswalks, sidewalks, etc.)
- 2 Park entrance connects to the surrounding park trails and activity areas. Pathways connect to destinations with signage.
- 4 Sufficient parking for intended park use/available park amenities.
- 2 Entrance and trails are ADA-accessible (n/a in dedicated hiking/biking areas).

Total Score out of 30: 20

Park Features:

2 Trails	Community center
Soccer/Football/Ultimate/Field hockey/Lacrosse field	Fishing pier
Baseball/Softball diamond/field	Restrooms
Tennis court	2 Sufficient amount of trash receptacles
Basketball court	2 Sufficient number of drinking fountains
Volleyball court	2 Shelters for shade
2 Fencing	2 Benches
2 Playground	
Fitness station	
Swimming pool	
2 Community gardens	
Skate park	
Off-leash dog park	
2 Splash pad/park	
2 Natural areas	
2 Amphitheaters/Music/Performance spaces	
3 Picnic areas/Pavilions	
3 BBQ Pit	
2 Paved open spaces/Plazas	

Total Score: 33 Total # of scored items: 14 Average Score (Total/# of scored items): 2.3

Safety & Maintenance Concerns:

- 2 No graffiti, vandalism, litter, animal waste, etc.
- 2 No broken amenities.
- 6 No evidence of unauthorized camping/vagrancy in the park.
- 2 Proper lighting at park entrance.
- 2 Proper lighting along the perimeter of the park.
- 2 Proper lighting along park trails.
- 2 Proper lighting at nighttime activity areas (tennis courts, sports fields, performance spaces, plazas, sitting areas, etc.).

Total Score out of 35: 18

Aesthetics:

- 2 Variety of landscape types and environments (n/a if a single use facility such as a playground or pool).
- 1 Presence and variety of vegetation.
- 4 Abundant and well-placed trees in park/along park edge if a pocket park.
- 3 Attractive park surroundings, park perimeter, and presence of views from the park.
- 1 Variety and coordination of color in programmed environments (n/a for natural areas).
- 2 Attractively designed and coordinated signage, light fixtures, and furnishings (benches, trash receptacles, lamp posts, etc.).
- 2 Use of high-quality materials of park equipment, utilities, etc.
- 3 Pleasant sounds. Effective mitigation of loud/unappealing surrounding noises from highway, industry, etc.
- 3 Effective mitigation of unappealing surrounding land uses such as industrial facilities, derelict property, etc.

Total Score out of 45: 19

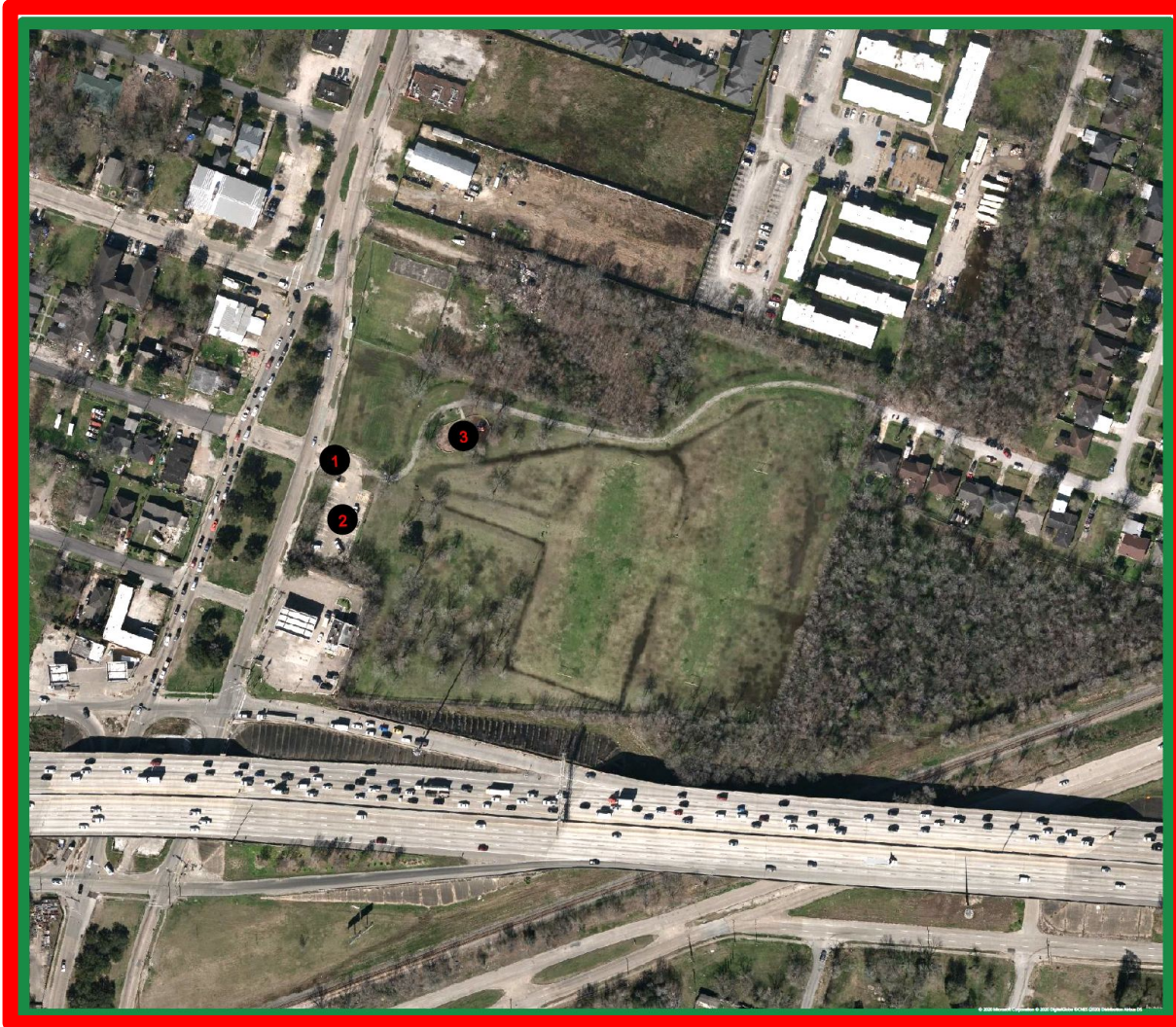
Comments:

Overall the park is in good condition. There are a few areas that are in need of general maintenance such as chalk on the sidewalks, adding mulch at the base of the playground equipment. The signs identifying the fruit that falls are not maintained.

There was evidence of vagrancy as someone was sleeping on the bench during the assessment. However, that did not stop the people from continuing their morning exercise.

There are two challenges to the park. The first is signage. There is only one sign facing the northeast of the park. If you approach from the west, there is no signage. The second is ADA accessibility if you are crossing the street to enter the park. Either via the lot across the street or from bus or rail.

BEECH-WHITE PARK



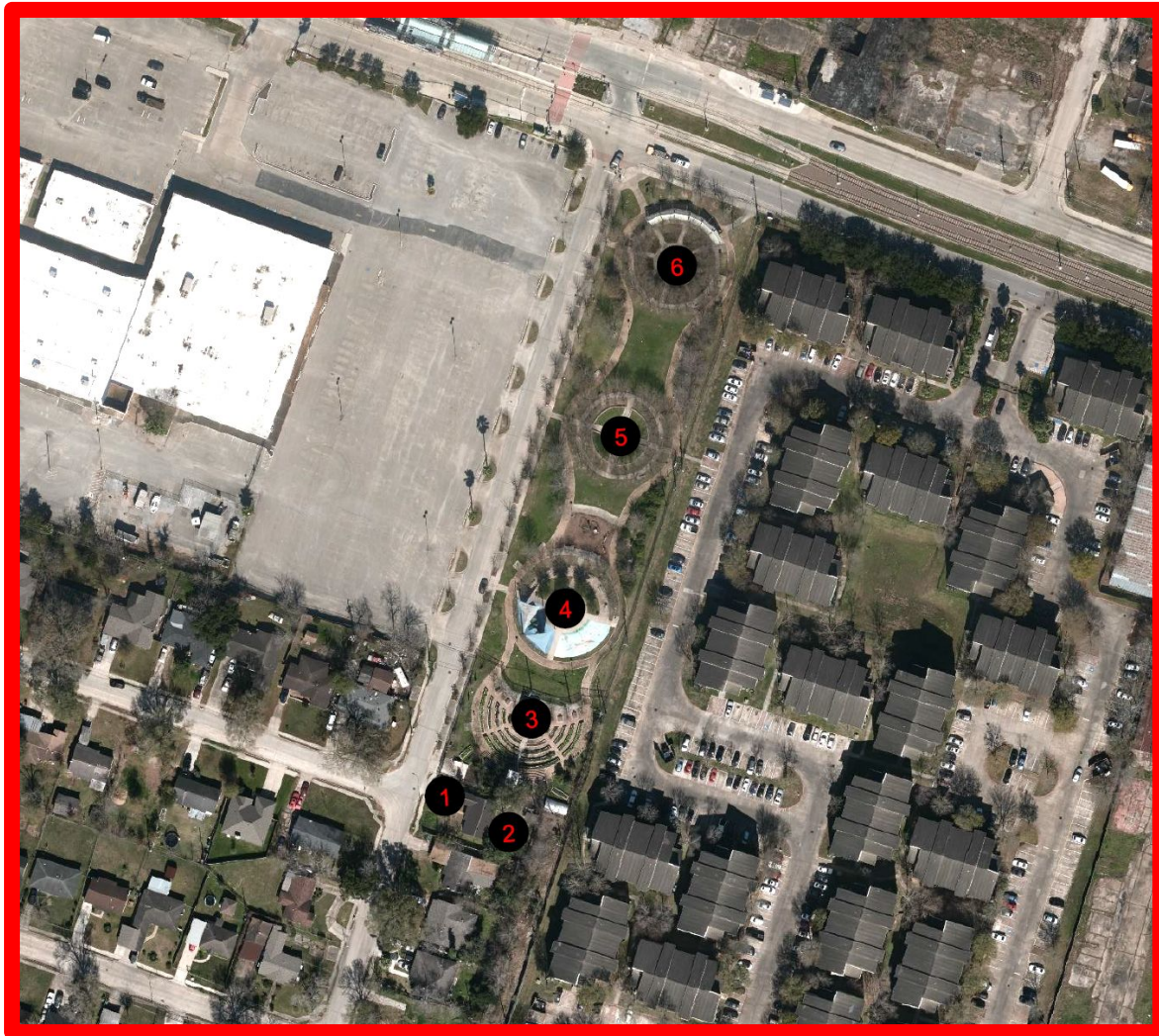
ACQUIRED: 1987
SIZE: 15.27 ACRES
OWNER: CITY OF HOUSTON



BEECH-WHITE PARK



PARK AT PALM CENTER



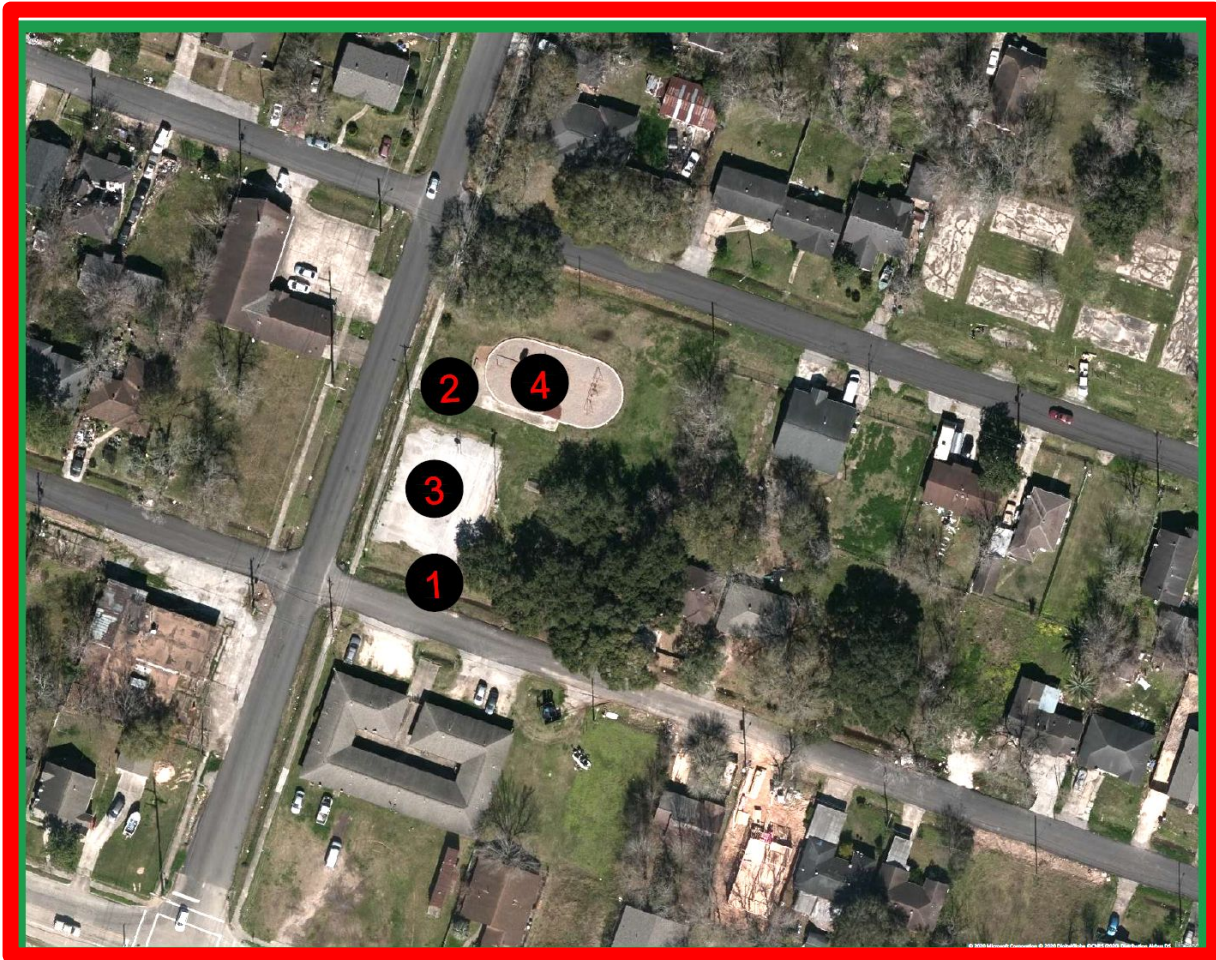
ACQUIRED: 2004
OWNER: CITY OF HOUSTON
SIZE: 2.17 ACRES



PARK AT PALM CENTER



CYRILL MADISON PARK



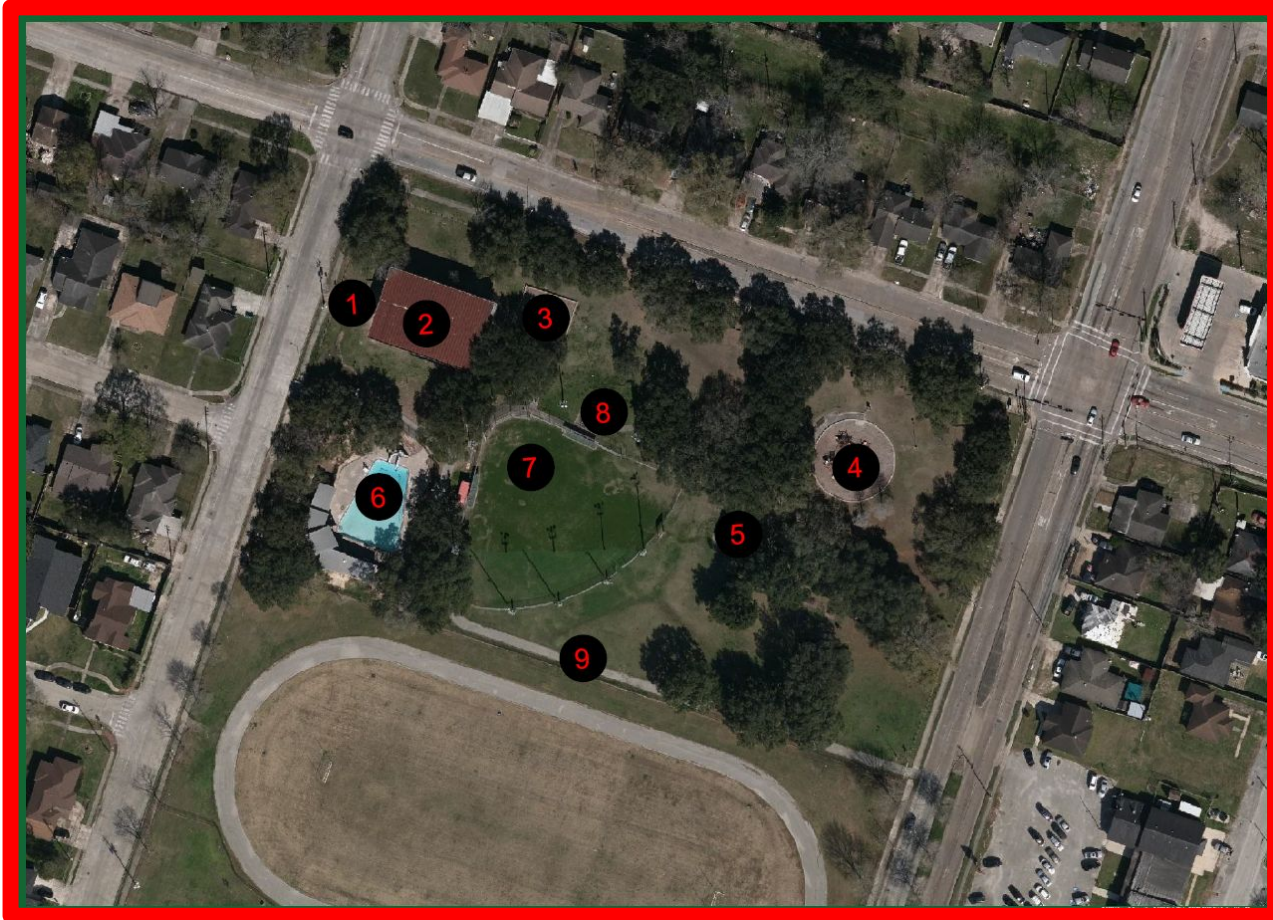
ACQUIRED: 1987
OWNER: CITY OF HOUSTON
SIZE: 1.23 ACRES



CYRILL MADISON PARK



YELLOWSTONE/GEORGE T NELSON PARK



ACQUIRED: 1951
OWNER: CITY OF HOUSTON
SIZE: 6.03 ACRES



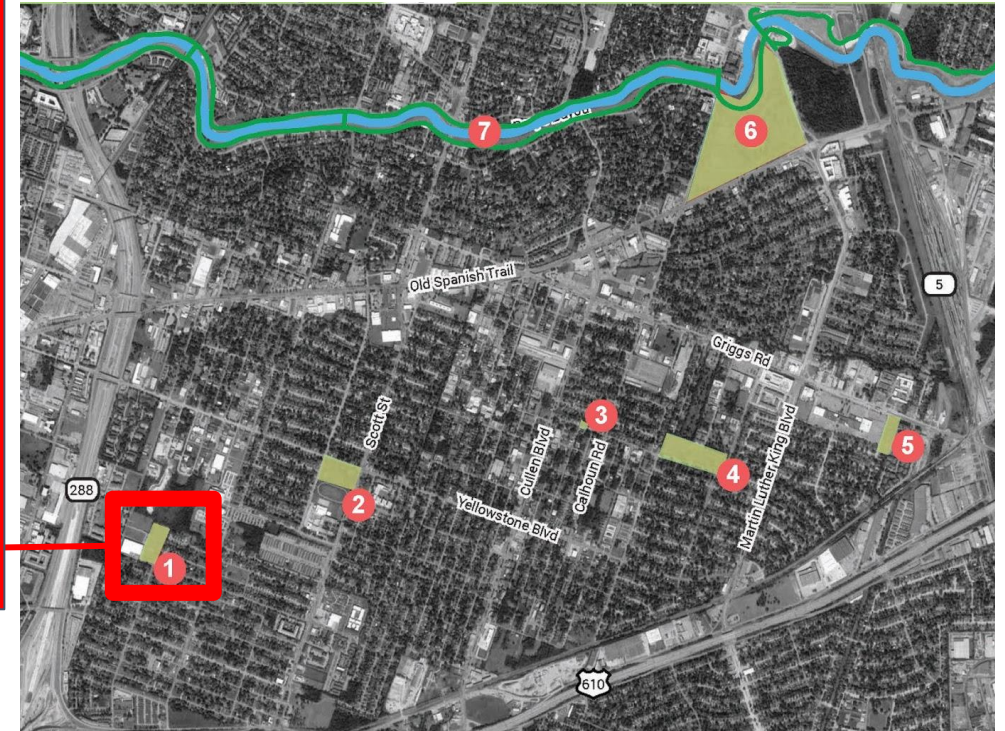
YELLOWSTONE/GEORGE T NELSON PARK



ZOLLIE SCALES PARK



ACQUIRED: 1960
OWNER: CITY OF HOUSTON
SIZE: 14.3 ACRES



Pictures resource:
<http://www.hearourhouston.com/tour/a-look-back-at-south-union-mr-wiley/>

ZOLLIE SCALES PARK



ZOLLIE SCALES PARK



5



6



4



11



8



3



9

STRETCH BREAK



Questions or comments so far?

Enter them in the chat!

We will address them either later in this meeting or will follow up afterwards.

OST/SOUTH UNION PARKS PROJECT - PHASE 1
OUTREACH / PARK STEWARDSHIP BUILDING

HOUSTON PARKS BOARD

GO ARTS TEAM

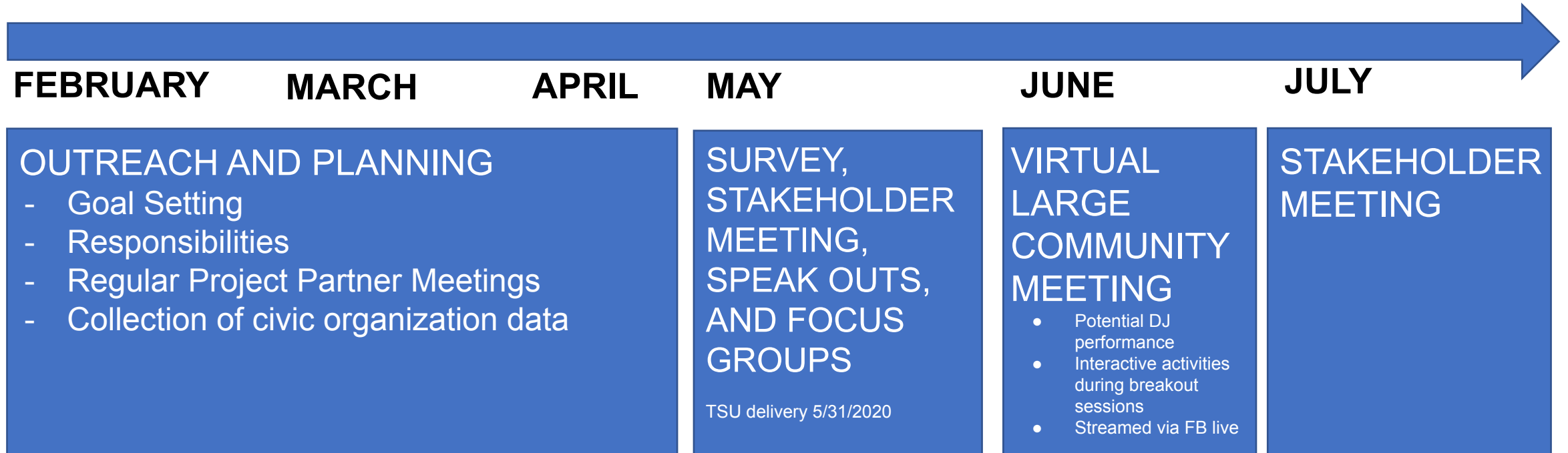
PHASE 1 - OUTREACH

OUTREACH PRINCIPLES

- Transparency, accountability, empathy, and humility are critical
- Community members are experts on their own needs
- It is our responsibility to identify and reduce barriers to participation
- We need to acknowledge our own implicit biases and the limits of our cultural competency
- It is important to share decision-making and leadership
- We need to have (and set) flexible and realistic expectations
- Coalition-building, collaboration, and partnerships are key
- We must continually evaluate process and be willing to change course
- **BIG PICTURE GOAL: Engagement should help empower community members to foster long-term park stewardship**

PHASE 1 - OUTREACH

OUTREACH TIMELINE



TASKS

- **Plan** – brainstorming, agree on format, action items
- **Publicize** – see outreach methods next
- **Execute** – volunteers to help get the word out

PHASE 1 - OUTREACH

OUTREACH CATEGORIES

- Social Media – facebook, twitter, hashtags, etc.
- Electronic – email, webpage, robocalls, text messages, etc.
- Grass Roots – Door tags, postcards, postering/flyers, virtual tours, etc.
- Speak-outs – Attending virtual community meetings to give information
- Online Survey (bilingual)



PHASE 1 - OUTREACH

RESPONSIBILITIES: see chart

GOAL SETTING:

OST/South Union Statistics (2015 – census in 2020!)

- 8,636 Households
- 19,141 Residents

General Goals

- Survey response rate: 200 to 250 responses
- Virtual stakeholder meeting(s) attendance: 25 people
- Virtual community meeting(s) attendance: 100 people
- Mailings: 500 postcards
- # of views of the project webpage?
- Social media metrics being established

Date	Item	Ownership	Avenues	Notes
Late April to early May	Develop survey to determine technology capabilities and interest in project	Lisa G / All partners	N/A	Completed
Late April to Early May	Collect civic club, super neighborhood and civic organization contact information	HPB and Paulette Wagner	N/A	Completed
May 5, 2020	Survey sent to OST/South Union residents	Lisa G/ All partners	Paulette to civic leaders All partners via social media	Link to survey here
May 14, 2020	Stakeholder Meeting	NRCDC / All partners	TBD / all partners	List of stakeholders
End of May	Focus Group meetings per park	HPB/GO Arts/HPARD	TBD	
June 2020	Virtual Community Meeting	NRCDC / All partners	TBD / All partners	Postcards to residents about meeting and signs placed at parks
Late June or early July 2020	Stakeholder Meeting	NRCDC / All partners	TBD / all partners	List of stakeholders

GOAL - PARK STEWARDSHIP AND ACTIVATION



TAKE ADVANTAGE OF EXISTING PROGRAMS:

- HPARD Volunteer Group
- HPARD Recreation Group
- HPARD Adopt-a-Park

ENCOURAGE COMMUNITY INVOLVEMENT IN PARKS



- movie nights
- activities for kids
- carnivals put on by HOAs
- basketball 3 on 3 competitions
- cultural events
- park clean ups
- butterfly garden planting

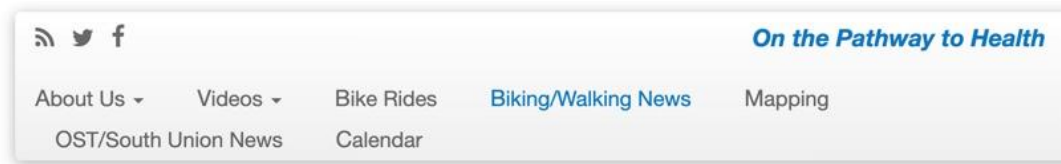
EMPOWER COMMUNITY TO BECOME PARK STEWARDS

OST/SOUTH UNION PARKS PROJECT - PHASE 1
COORDINATION WITH AREA PROJECTS

CURRENT AREA PROJECTS - GREENWAY

- Strollin' & Rollin' GO Team—weekly bike rides to assess infrastructure and sidewalk conditions
- Technical Assistance by National Parks Service
- 435 surveys completed by residents and stakeholders regarding travel patterns to nearby destinations and within the neighborhood

- ❖ Produced a Mobility Plan that was included in the City of Houston Bike Plan
- ❖ Developed a Neighborhood Greenway proposal which was accepted for FTA funding by Houston Southeast Management District

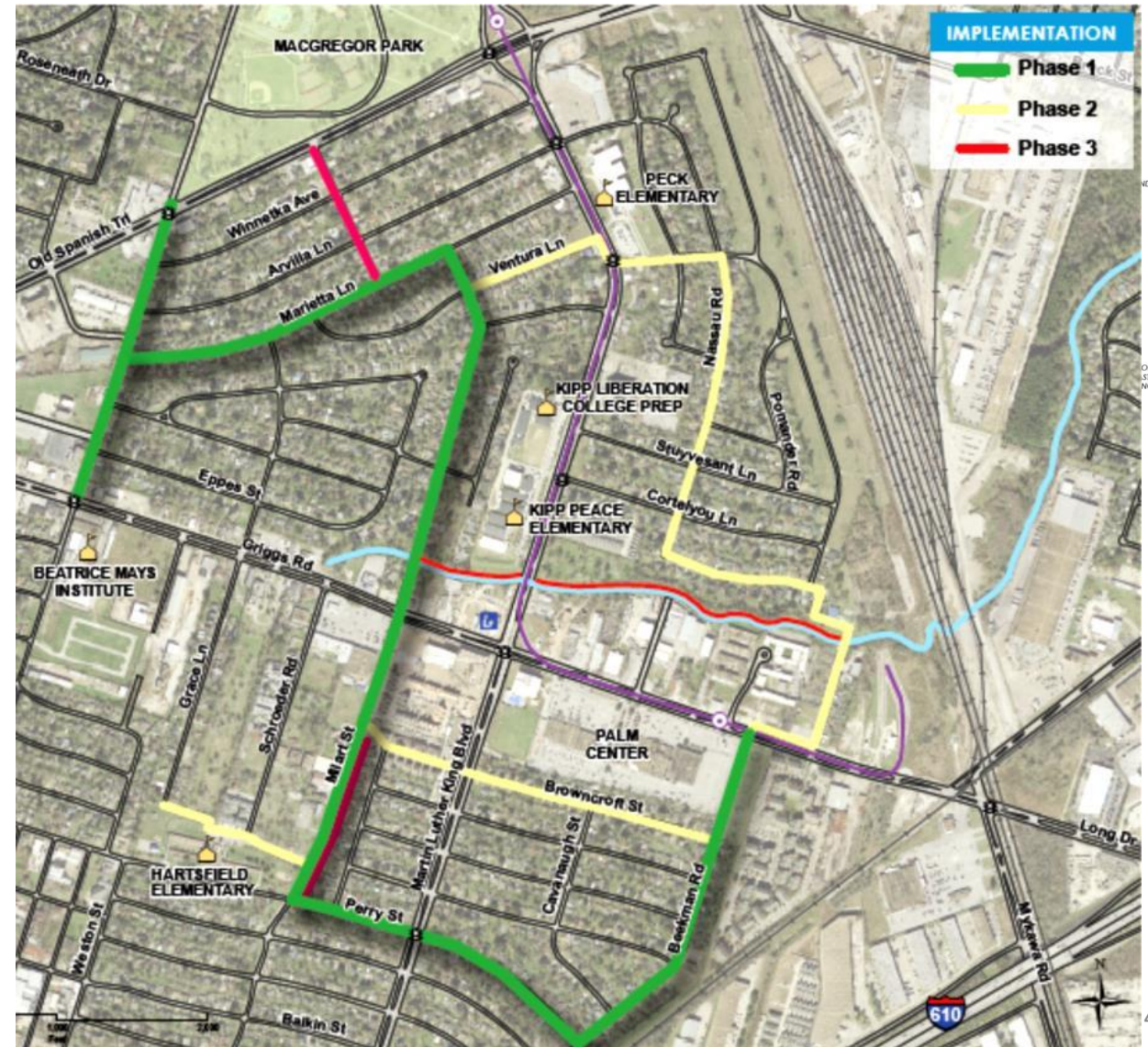


[Home](#) » [Biking News](#)

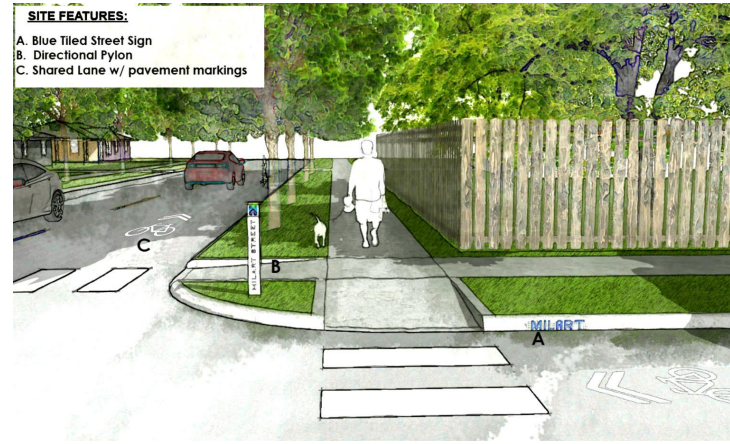
CURRENT AREA PROJECTS - GREENWAY

Neighborhood greenways connecting Palm Center to MacGregor Park

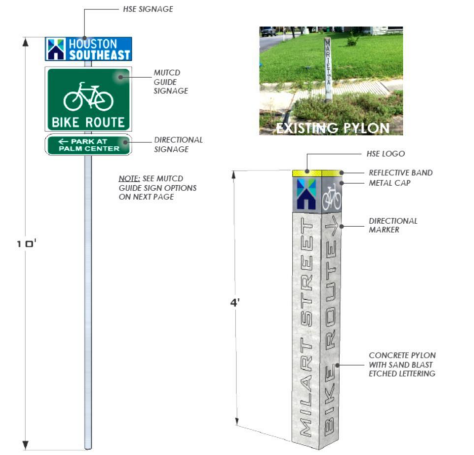
- Managed by the Greater Southeast Management District
- Three phases planned
- Phase 1 under construction
- Phase 1 Completion expected August 2020



CURRENT AREA PROJECTS - GREENWAY



SITE FEATURES:
A. Blue Tiled Street Sign
B. Directional Pylon
C. Shared Lane w/ pavement markings



For more information contact:
Nikki Knight - nknight@houstonse.org

CURRENT AREA PROJECTS - DREAM 77021

DREAM 77021...

- Collaborative approach to engaging historically-excluded residents and community members in assessing and prioritizing community conditions that support mental health, wellbeing, resilience, and equity in OST/South Union

- Project of the OST/South Union GO Neighborhood's Health Improvement Partnership (OHIP), which is a multi-sector coalition comprised of residents, partner organizations, and other community stakeholders

- Development of a comprehensive action plan, using THRIVE* as a framework to address 12 community factors, including *Parks & Open Space*



CURRENT AREA PROJECTS - DREAM 77021



FUTURE AREA INITIATIVES

50/50 PARKS PARTNERS

Collaboration between:

- Houston Parks and Recreation Department
 - Houston Parks Board
 - Greater Houston Partnership
-
- ❑ Initiative to uplifting neighborhood parks (1 to 15 acres)
 - ❑ [Mayor Sylvester Turner's announcement](#) October 2019
 - ❑ Challenged 50 companies to join a citywide coalition driving improvements to 50 neighborhood parks.

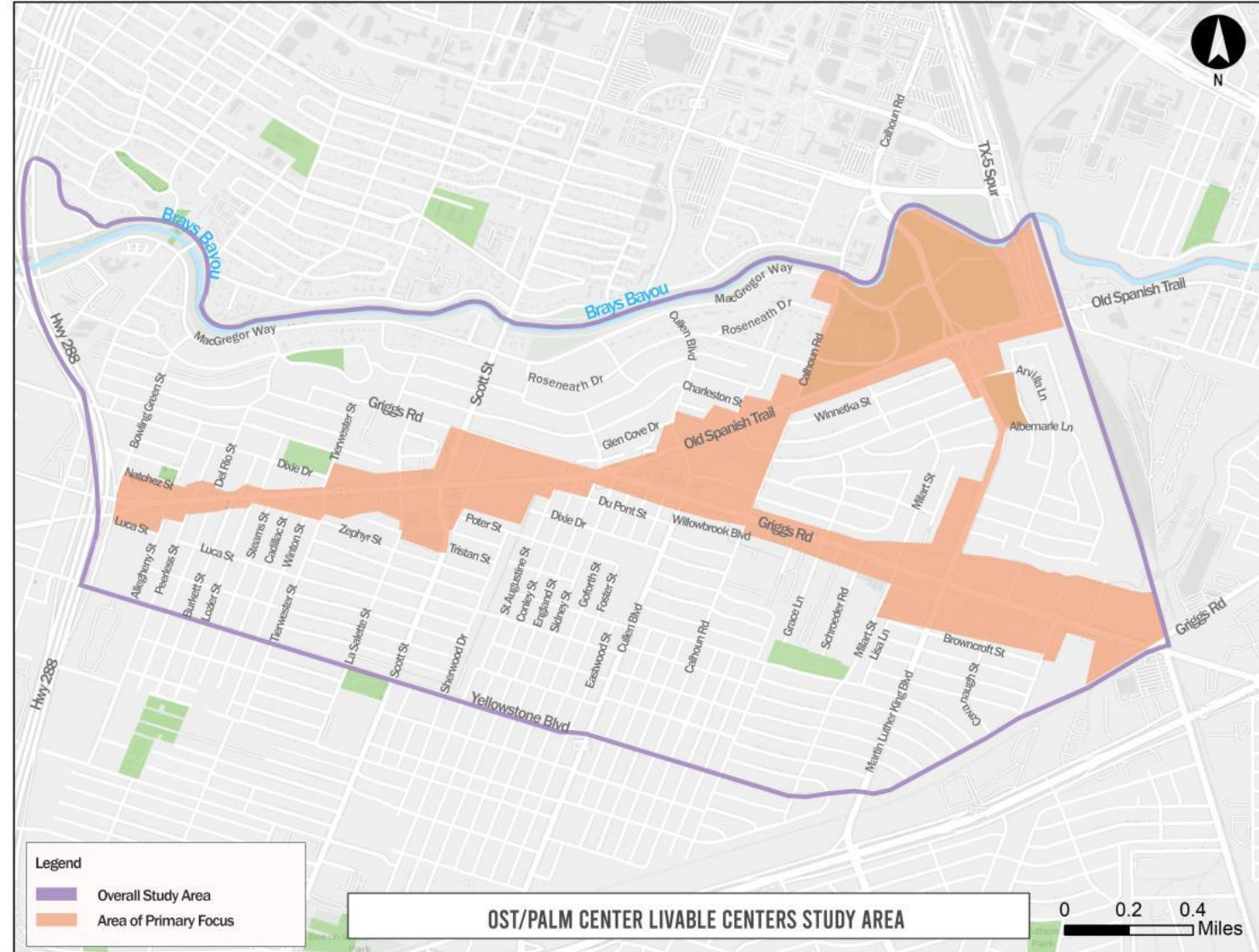
<https://houstonparksboard.org/donate/5050-park-partners>



FUTURE AREA INITIATIVES

OST/PALM CENTER LIVABLE CENTERS STUDY FY2021

The objective of the Houston-Galveston Area Council Livable Centers planning studies is to reimagine auto-focused infrastructure and to help create quality, walkable, mixed-used places, create multi-modal travel choices, improve environmental quality, promote economic development and housing choice.



BREAK OUT SESSION

- Any thoughts or feedback on the information so far?
- How has COVID-19 changed things in OST/SU?
- Any comments on the strategies we presented?
- Ideas for engaging the community?
- Any gaps or new ideas?

WRAP UP AND NEXT STEPS

EXISTING CONDITIONS ASSESSMENT

- EXISTING CONDITIONS REPORT Share for comment June 2020
- INTEGRATE COMMENTS July/August 2020

OUTREACH

- ONLINE SURVEY Open until May 22, 2020
- STAKEHOLDER MEETING #1 Today!
- VIRTUAL OUTREACH May 2020
- COMMUNITY MEETING June 2020
- STAKEHOLDER MEETING #2 July 2020

PHASE 1 WRAP UP

- PHASE 1 REPORT August 2020

STAKEHOLDER INVOLVEMENT

HOW YOU CAN HELP:

- Share the survey with your networks
- Help us spread the word about this project
- Let us know of any virtual events going on in OST/SU
- Interested in activating a specific park - let us know!
- Does your civic club want to adopt-a-park? We will help!

QUESTIONS / COMMENTS / IDEAS?

Contact Lisa K -

lisa@houstonparksboard.org





THANKS EVERYONE!

Contact - Lisa Kasianowitz - lisa@houstonparksboard.org - with questions